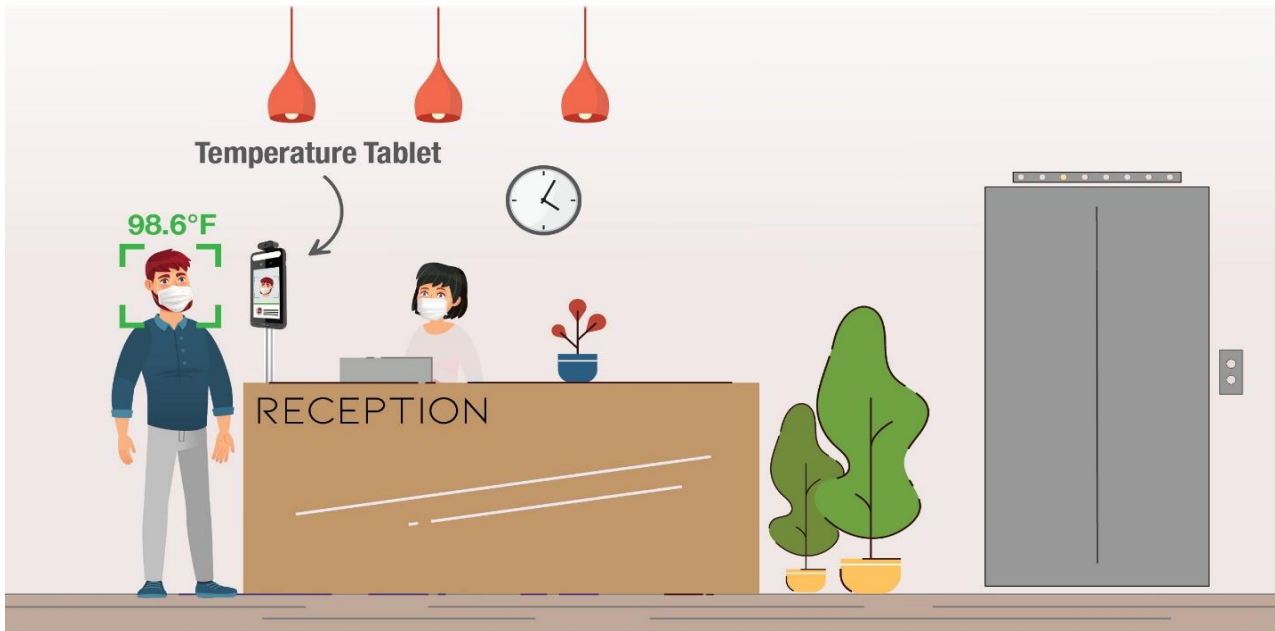


Body Temperature Measurement Tablet



Temperature & Face Recognition Tablet for Individual Scanning & Access



- PAR-P2TEMPTABLET**
Temperature Tablet
- 8 inch LCD screen
 - Accurate within 0.54°F
 - 20,000 Faces
 - Face Mask Detection
 - Multiple Notification Options
 - Integrates with Access Control



MULTIPLE NOTIFICATION OPTIONS
Can detect if a Mask is not being worn & Deny Access based on configuration

MOUNTING OPTIONS

For Use with the PAR-P2TEMPTABLET



InVid Tech is introducing a new product to measure an individual's temperature. The tablet can accurately read the temperature of a single person with an accuracy of <math><0.54^{\circ}\text{F}</math>. You can customize the system to alert you when anyone passes through whose temperature is above the threshold set.

This product offers individual temperature readings at a short-range distance of about 1-1.5 feet. The short-range measuring distance prevents the need for constant calibration. It also can do Facial Recognition at a more extended range of about 1-6.5 feet. The Temperature Tablet, which holds up to 20,000 faces, can integrate with your access control system to allow access to restricted areas. The unit can detect if a person is wearing a mask and will instruct them to put on a mask before allowing access. Notify individuals with additional integrated messages.

This device will work effectively in many scenarios where there are limited amounts of people passing through that need to be scanned. For example, offices and buildings are a great option to utilize this device. Give access to select people at certain times while making sure that their temperature is within a safe range. For locations that have many people and to be able to avoid lines, we recommend the Body Temperature Camera System, which scans multiple people simultaneously.

Call for pricing more information

Midland Building Innovations (301) 846-4188 shop@midlandbi.net